

Technical Data

Specifications & Capacities

120|HT

Telescopic Boom Truck Crane
120 US ton
110 metric ton



CAUTION: This material is supplied for reference use only. Operator must refer to in-cab Crane Rating Manual and Operator's Manual to determine allowable crane lifting capacities and assembly and operating procedures.

Table Of Contents

| | |
|---|-----------|
| Boom, Attachments, and Upper Structure | 1 |
| Boom | 1 |
| Boom Wear Pads | 1 |
| Boom Head | 1 |
| Boom Elevation | 1 |
| Auxiliary Lifting Sheave – Optional | 1 |
| Heavy Duty Lifting Sheave Package – Optional | 1 |
| Hook Blocks and Balls – Optional | 1 |
| Fly – Optional | 1 |
| Fly Extensions – Optional | 1 |
| Upper Operator’s Cab and Controls | 2 |
| Swing | 3 |
| Electrical | 3 |
| Load Hoist System | 3 |
| Load Hoist Performance | 3 |
| Main and Auxiliary Winches | 3 |
| Hydraulic System | 4 |
| Counterweight | 4 |
| Carrier | 6 |
| General | 6 |
| Outriggers | 6 |
| Steering and Axles | 6 |
| Suspension | 6 |
| Tires and Wheels | 6 |
| Brakes | 6 |
| Electrical | 6 |
| Engine | 6 |
| Transmission | 6 |
| Carrier Speeds and Gradeability | 7 |
| Fuel Tank | 7 |
| Hydraulic System | 7 |
| Pump Drive | 7 |
| Lower Cab and Controls | 8 |
| Additional Equipment | 8 |
| Transport Scenarios – Axle Loads | 9 |
| General Dimensions | 10 |
| EPA 2021 | 10 |
| Working Range Diagram | 11 |
| Main Boom + 9.5’ Fly | 11 |
| Main Boom + Attachments | 12 |

| | |
|---|-----------|
| Boom Extend Modes | 13 |
| Main Boom Lift Capacity Charts | 14 |
| 16,000 lb Counterweight – Fully Extended Outriggers – 360° Rotation | 14 |
| 20,000 lb Counterweight – Fully Extended Outriggers – 360° Rotation | 15 |
| 36,500 lb Counterweight – Fully Extended Outriggers – 360° Rotation | 16 |
| 49,100 lb Counterweight – Fully Extended Outriggers – 360° Rotation | 17 |
| Main Boom + Offset Fly Lift Capacity Charts | 18 |
| 49,100 lb Counterweight – Fully Extended Outriggers – 360° Rotation | 18 |
| Main Boom Length + 9.5 ft Manual Offset Fly (0°, 15°, 30°, 45°, Offset) | 18 |
| 16,000 lb Counterweight – Fully Extended Outriggers – 360° Rotation | 19 |
| 164.1 ft Main Boom Length | 19 |
| 35 ft Manual Offset Fly | 19 |
| 58 ft Manual Offset Fly | 19 |
| 16,000 lb Counterweight – Fully Extended Outriggers – 360° Rotation | 20 |
| 164.1 ft Main Boom Length | 20 |
| 74 ft Manual Offset Fly | 20 |
| 90 ft Manual Offset Fly | 20 |
| 36,500 lb Counterweight – Fully Extended Outriggers – 360° Rotation | 21 |
| 164.1 ft Main Boom Length | 21 |
| 35 ft Manual Offset Fly | 21 |
| 58 ft Manual Offset Fly | 21 |
| 36,500 lb Counterweight – Fully Extended Outriggers – 360° Rotation | 22 |
| 164.1 ft Main Boom Length | 22 |
| 74 ft Manual Offset Fly | 22 |
| 90 ft Manual Offset Fly | 22 |
| 49,100 lb Counterweight – Fully Extended Outriggers – 360° Rotation | 23 |
| 164.1 ft Main Boom Length | 23 |
| 35 ft Manual Offset Fly | 23 |
| 58 ft Manual Offset Fly | 23 |
| 49,100 lb Counterweight – Fully Extended Outriggers – 360° Rotation | 24 |
| 164.1 ft Main Boom Length | 24 |
| 74 ft Manual Offset Fly | 24 |
| 90 ft Manual Offset Fly | 24 |

Boom, Attachments, and Upper Structure

■ Boom

Design —Six section, formed construction of extra high tensile steel consisting of one base section and five telescoping sections. The two plate design of each section has multiple longitudinal bends for superior strength. Each telescoping section extends independently by means of one double-acting, single stage hydraulic cylinder with integrated holding valves.

Boom

- 38.3–164.1 ft (11.7–50.0m) six section boom
- Integral boom dolly connection
- Six boom extend modes (EM1 through EM6), controlled from the operator's cab, provide superior capacities by varying the extension of the telescoping sections:
 - EM1 extends to 164.1 ft (50.0m)
 - EM2 extends to 152.4 ft (46.5m)
 - EM3 extends to 140.3 ft (42.7m)
 - EM4 extends to 126.3 ft (38.5m)
 - EM5 extends to 114.6 ft (34.9m)
 - EM6 extends to 89.5 ft (27.3m)
- Mechanical boom angle indicator
- Maximum tip height for each extend mode is:
 - EM1 is 173 ft (52.6m)
 - EM2 is 161 ft (49.1m)
 - EM3 is 149 ft (45.5m)
 - EM4 is 136 ft (41.3m)
 - EM5 is 124 ft (37.8m)
 - EM6 is 99 ft (30.2m)

Boom Wear Pads

- Wear pads with Teflon inserts that self-lubricate the boom sections
- Bottom wear pads are universal for all boom sections
- Top wear pads are universal for all boom sections

Boom Head

- Five 16.5 in (41.9cm) root diameter nylon sheaves to handle up to ten parts of line
- Easily removable wire rope guards
- Rope dead end lugs on each side of the boom head
- Boom head is designed for quick-reeve of the hook block
- Wind speed indicator
- Aviation obstruction marking light and flag

Boom Elevation

- One double acting hydraulic cylinder with integral holding valve
- Boom elevation: -3° to 80°

Auxiliary Lifting Sheave – Optional

- Single 16.5 in (41.9cm) root diameter nylon sheave
- Easily removable wire rope guards
- Does not affect erection of the fly or use of the main head sheaves

Heavy Duty Lifting Sheave Package – Optional

- Necessary to achieve greater than 12 parts of line lifts
- Two 16.5 in (41.9cm) root diameter nylon sheaves
- Easily removable wire rope guards
- Does not affect use of the main head sheaves or auxiliary lifting sheave
- Cannot be used when fly is erected

Hook Blocks and Balls – Optional

- 27 ton (25mt) 1 sheave quick-reeve hook block with safety latch
- 60 ton (55mt) 3 sheave quick-reeve hook block with safety latch
- 90 ton (82mt) 5 sheave quick-reeve hook block with safety latch
- 140 ton (127mt) 7 sheave quick-reeve hook block with safety latch
- 10 ton (9mt) swivel hook ball with safety latch

Fly – Optional

- 9.5 ft–35 ft (2.9m–10.7m) two piece lattice fly, stowable, offsettable to 0° , 15° , 30° , and 45° . Maximum tip height is 207 ft (63m).
- 9.5 ft–35 ft–58 ft (2.9m–10.7m–17.7m) three piece lattice fly, stowable, offsettable to 0° , 15° , 30° , and 45° . Maximum tip height is 231 ft (70.3m).
- 35 ft (10.7m) one piece fly
- 35 ft–58 ft (10.7m–17.7m) two piece fly

Fly Extensions – Optional

- One 16 ft (4.9m) lattice extension to be mounted between the boom head and fly options. Maximum tip height is 246 ft (75.0m).
- Two 16 ft (4.9m) lattice extensions to be mounted between the boom head and fly options. Maximum tip height is 262 ft (79.7m).

■ Upper Operator's Cab and Controls

Environmental Cab – Fully enclosed, one person cab of tubular and sheet steel structure with formed plastic interior panels.

Equipped with:

- Tinted and tempered glass windows
- Extra—large fixed front window with time delayed windshield wiper and washer
- Swing up roof window with windshield wiper and washer
- Sliding left side door with large fixed window
- Sliding right side window and pop—out rear window for ventilation
- Six way adjustable, cushioned seat with seat belt and storage compartment
- Diesel fired warm—water heater with ten air ducts for front windshield defroster and cab floor
- Air Conditioning – Integral with cab heating system utilizing the same ventilation outlets and automatic temperature control (ATC)
- Adjustable sun screen
- Dome lights with red nighttime reading LED's
- Cup holder
- Fire extinguisher
- Two position travel swing lock
- AM/FM Bluetooth radio

Armrest Controls – Two dual axis electronic joystick controllers or optional single axis electronic controllers for:

- Swing hoist
- Boom hoist
- Main (front) winch
- Auxiliary (rear) winch – optional
- Winch high/low speed switch(es)
- Warning horn button
- Swing park brake switch
- Engine throttle lock switch
- Engine set/resume switch
- Cab tilt
- Counterweight removal
- Hydraulic offset fly – optional

Foot Controls

- Boom telescope
- Swing brake
- Engine throttle

Upper Right Console – Controls and indicators for:

- | | |
|-------------------------------------|--------------------------------|
| • Engine ignition | • Radio |
| • Engine stop | • DRI on/off selection |
| • Function lockout | • HVAC controller |
| • Front windshield wiper and washer | • 360 swing lock – optional |
| • Cab lights and upper frame lights | • Boom floodlights |
| • Horn | • Rotating beacon/Strobe light |
| • Dome light with switch | • Top hatch wiper washer |
| • E—stop switch | • Winch(es) disable |
| | • Engine indicator gauge |

Rear Right Side Panel

- 12V accessory outlet (10amp)
- USB charge port

Camera Display – Located on the right A—post with an adjustable mount

- Displays right side of upper
- Displays main and auxiliary winches

Diagnostic Center – Located on the right rear wall behind the seat.

- Engine diagnostic
- RCL CANBUS diagnostic
- Boom CANBUS diagnostic
- Outrigger CANBUS diagnostic

Fuse & Relay Panel – Located on the left rear wall behind the seat.

Link-Belt Pulse 2.0 – The Link-Belt in-house designed, total crane operating system that utilizes a 10 in touch screen color display with integrated RCL and engine data, advanced diagnostics and systems monitoring, Wi-Fi capable for remote software updates, operator customizable, and a readout and operator interface for the following systems:

- **Rated capacity limiter** – LCD graphic audio – visual warning system integrated into the dash with anti – two block and function limiter. Operating data includes:

- RCL controller USB diagnostic
- Crane configuration
- Boom length and angle
- Boom head height
- Allowed load and percent of allowed load
- RCL light bar
- Boom angle
- Radius of load
- Actual load
- Wind speed
- Highlighted unit of measurement on working screen
- Telescope operation displayed in real time
- Outrigger position sensing
- Drum rotation direction indication
- Third wrap indicator
- Diagnostics
- Counterweight detection system
- Operator settable alarms (include):
 - Maximum and minimum boom angles
 - Maximum tip height
 - Maximum boom length
 - Swing left/right positions
 - Operator defined area (imaginary plane)

• Cab Instrumentation

- | | |
|--|--------------------------|
| • Tachometer | • Swing park brake light |
| • Engine water temperature | • Engine speed |
| • Fuel level | • Engine oil pressure |
| • Hydraulic oil temperature | • Battery voltage |
| • Stop engine | • Fuel rate (gal/hr) |
| • Check engine | • Engine load |
| • Wait to start | • Engine diagnostics |
| • Diesel exhaust fluid (DEF) level | |
| • Engine air filter high restriction light | |
| • Regeneration light | |
| • Regeneration inhibit switch | |
| • Regeneration initiate switch | |
| • High exhaust temperature light | |
| • Regeneration disabled light | |

• **Telematics** – Cellular based data logging and monitoring system that provides:

- Location and operational settings
- Routine maintenance
- Crane and engine monitoring
- Diagnostic and fault codes

■ Swing

Motor/Planetary – Bi-directional, hydraulic swing motor mounted to a planetary reducer for 360° continuous smooth swing at 1.9 rpm.

Swing Park Brake – 360°, electric over hydraulic, (spring applied/hydraulic released) multi-disc brake mounted on the speed reducer. Operated by a switch from the operator's cab.

Swing Brake – 360°, foot operated, speed reducing system with disc brake hold feature.

Swing Lock – Two-position swing lock (0° and 180°) operated from the operator's cab.

360° Positive Swing Lock – Optional – Meets New York City requirement.

■ Electrical

Swing Alarm – Audio warning device signals when the upper is swinging.

Lights

- Two working lights on front of the cab.
- One amber strobe beacon on top of the cab – optional
- Boom floodlight – Single – One high intensity floodlight mounted at the front portion of the boom base section. Adjustable to fixed positions.
- Boom floodlight – Dual – Two high intensity floodlights mounted at the front portion of the boom base section. Two adjustable to individual fixed positions.
- Boom floodlight package – Three high intensity floodlights mounted at the front portion of the boom base section. Two adjustable to individual fixed positions and one remote controlled.
- Work lighting package – Four high intensity work lights mounted on top of the operator's cab, the right side of the superstructure facing forward, on the upper work platform, and on the left side of the superstructure facing down.

■ Load Hoist System

Load Hoist Performance

| Main (Rear) and Auxiliary (Front) Winches – 3/4 in (19mm) Rope | | | | | | | | | | |
|--|-------------------|--------|-------------------|-------|-----------------|-------|-------|------|-------|-------|
| Layer | Maximum Line Pull | | Normal Line Speed | | High Line Speed | | Layer | | Total | |
| | lb | kN | ft/min | m/min | ft/min | m/min | ft | m | ft | m |
| 1 | 23,632 | 105.12 | 150 | 45.7 | 241 | 73.5 | 115 | 35.1 | 115 | 35.1 |
| 2 | 21,616 | 96.15 | 164 | 50.0 | 264 | 80.5 | 125 | 38.1 | 240 | 73.2 |
| 3 | 19,917 | 88.60 | 178 | 54.3 | 286 | 87.2 | 136 | 41.5 | 376 | 114.6 |
| 4 | 18,465 | 82.14 | 192 | 58.5 | 309 | 94.2 | 147 | 44.5 | 522 | 159.1 |
| 5 | 17,211 | 76.56 | 206 | 62.8 | 331 | 100.9 | 157 | 47.9 | 679 | 207.0 |
| 6 | 16,116 | 71.69 | 220 | 67.1 | 354 | 107.9 | 168 | 51.2 | 847 | 258.2 |

| Wire Rope Application | | in | mm | Type | lb | kg |
|-------------------------|----------|-----|----|--|--------|---------|
| Main (Rear) Winch | Standard | 3/4 | 19 | 37x7 rotation resistant – right lang lay (Type KC) | 16,000 | 7 257.5 |
| | Optional | 3/4 | 19 | 35x7 rotation resistant – right lang lay (Type CC) | 17,360 | 7 874.4 |
| Auxiliary (Front) Winch | Standard | 3/4 | 19 | 37x7 rotation resistant – right lang lay (Type KC) | 16,000 | 7 257.5 |
| | Optional | 3/4 | 19 | 35x7 rotation resistant – right lang lay (Type CC) | 17,360 | 7 874.4 |

Main and Auxiliary Winches

- Axial piston (2-speed) motors driven through planetary reduction unit for positive control under all load conditions.
- Grooved lagging
- Power up/down mode of operation
- Hoist drum cable follower
- Drum rotation indicator
- Drum diameter: 15 in (38.1cm)
- Rope length:
 - Main: 730 ft (222.5m)
 - Auxiliary: 600 ft (182.9m)
- Maximum rope storage: 850 ft (259m)
- Terminator style socket and wedge

■ Hydraulic System

All circuits of the hydraulic system are pressure compensated.

Counterbalance Valves — All hoist motors, boom extend cylinders, and boom hoist cylinders are equipped with counterbalance valves to provide load lowering and to prevent accidental load drop if hydraulic power is suddenly reduced.

Hydraulic Oil Cooler — The carrier cooling package has an integrated hydraulic oil cooler. There is also an electric operated oil cooler in the upper for additional cooling capacity.

Boom Hoist Float Valves — For transporting the boom over the rear of the crane with a boom dolly. Allows hydraulic oil within the boom hoist cylinder to flow between piston side and case side, allowing the boom to float while on the boom dolly.

Swing Brake Release — For transporting the boom over the rear of the crane with a boom dolly. Holds the 360° swing park brake in the released position allowing free rotation of the upper structure.

■ Counterweight

Standard — Total of 16,500 lb (7.4t) of total counterweight consisting of four, hydraulically removable counterweights. Assembled and disassembled by hydraulic cylinders controlled from the operator's cab with capacities for:

- 0 lb (0t) counterweight
- 4,000 lb (1.8t) counterweight
- 8,000 lb (3.6t) counterweight
- 12,000 lb (5.4t) counterweight
- 16,000 lb (7.2t) counterweight

Optional — 20,000 lb (9t) in addition to standard counterweight for a total of 36,500 lb (16.4t) with additional capacities for:

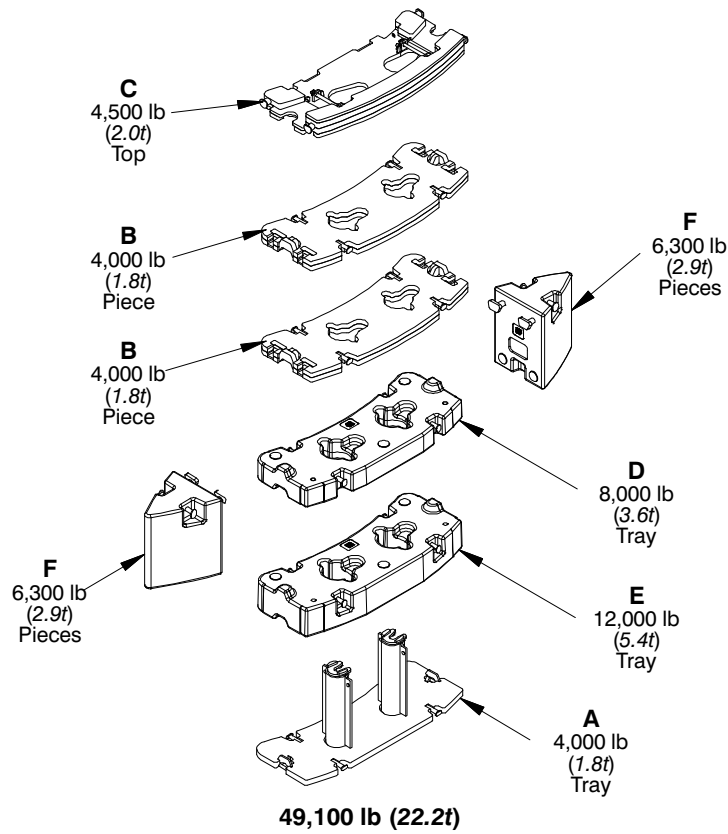
- 20,000 lb (9t) counterweight
- 24,000 lb (10.8t) counterweight
- 28,000 lb (12.7t) counterweight
- 32,500 lb (14.7t) counterweight
- 36,500 lb (16.4t) counterweight

Optional — 32,600 lb (14.8t) in addition to standard counterweight for a total of 49,100 lb (22.2t) with additional capacities for:

- 20,000 lb (9t) counterweight
- 24,000 lb (10.8t) counterweight
- 28,000 lb (12.7t) counterweight
- 32,000 lb (14.4t) counterweight
- 36,500 lb (16.4t) counterweight
- 49,100 lb (22.2t) counterweight*

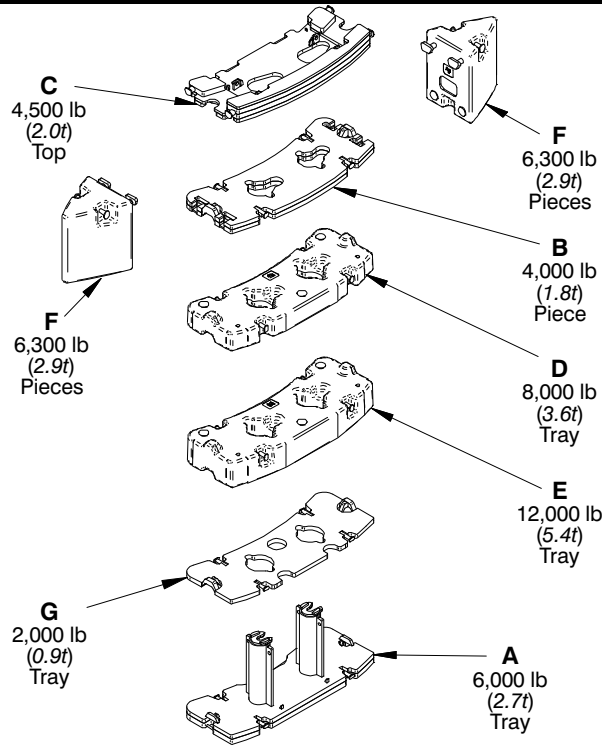
Low speed jobsite travel is offered for these optional counterweight configurations and a boom dolly or boom trailer may be required for on-highway travel.

* Overall width of the crane increases to 13 ft 10.8 in (4.24m) for this counterweight configuration



Allowed Counterweight Combinations – Standard

| | | | | |
|----------------------|----------|-------|-------|-----|
| 0 | | | | |
| 4,000 lb (1.8t) | A | C | | |
| 8,000 lb (3.6t) | AB | AC | | |
| 12,000 lb (5.4t) | ABB | ABC | AD | |
| 16,000 lb (7.2t) | ABBC | ABD | AE | ACD |
| 20,000 lb (9t) | ABBD | ABCD | ABE | |
| 24,000 lb (10.8t) | ABBE | ABCE | ABBCD | |
| 28,000lb (12.7t) | ABBCE | ABDE | ACDE | |
| 32,000lb (14.4t) | ABBDE | ABCDE | | |
| 36,500lb (16.4t) | ABBCDE | | | |
| 49,100lb (22.2t) | ABBCDEFF | | | |



49,100 lb (22.2t)

Allowable Counterweight Combinations – California Special

| | | | | |
|----------------------|----------|-------|-------|--|
| 0 | | | | |
| 4,500 lb (2.0t) | C | | | |
| 6,000 lb (2.7t) | A | | | |
| 8,000 lb (3.6t) | AG | | | |
| 10,000 lb (4.5t) | AC | AB | | |
| 12,000 lb (5.4t) | AGB | AGC | | |
| 16,000 lb (7.2t) | AGBC | AGD | | |
| 20,000 lb (9t) | AGBD | AGCD | AGE | |
| 24,000 lb (10.8t) | AGBE | AGCE | AGBCD | |
| 28,000lb (12.7t) | AGBCE | AGDE | | |
| 32,000lb (14.4t) | AGBDE | AGCDE | | |
| 36,500lb (16.4t) | AGBCDE | | | |
| 49,100lb (22.2t) | AGBCDEFF | | | |

Carrier

■ General

- 8 ft 6 in (2.6m) wide
- 23 ft 5.5 in (7.14m) wheelbase (centerline of first axle to centerline of fourth axle)
- **Frame** — Box—type, torsion resistant, welded construction made of high tensile steel. Equipped with front and rear towing and tie—down lugs, tow connections, and access ladders.

■ Outriggers

Boxes — Two double box, front and rear welded to the carrier frame.

Beams and Jacks — Four dual stage beams with Variable Confined Area Lifting Capacities (V—CALC) provide selectable outrigger extensions of full, intermediate, and retracted positions. 81 possible outrigger configurations. Jacks with integral check valves, hydraulically controlled from the operator's cab and on both sides of carrier. A fifth front bumper outrigger 16 in (40.6cm) diameter, self—storing with integral check valves is hydraulically controlled from the upper operator's cab and at the front bumper of carrier.

Pontoons

- **Main** — Four lightweight, stow'n go, 23.5" x 27.25" (59.7 x 69.2cm) hexagonal steel pontoons with a contact area of 443 in² (2 858cm²) can be stored for road travel in either the storage racks on the carrier or under the outrigger boxes
- **Front Bumper** — One, lightweight, self—storing, 16" (40.6cm) diameter steel pontoon with a contact area of 199 in² (1 284cm²)

Jack Reaction

- **Main** — 122,000 lb (542.7kN) force and 276 psi (1 903kPa) ground bearing pressure
- **Front Bumper** — 40,000 lb (177.9kN) force and 201 psi (1 386kPa) ground bearing pressure

■ Steering and Axles

- Dual gear steering system provides hydraulic assisted steering with mechanical link between steering wheel and wheels
- **Drive** — 8 x 4 for on/off—highway travel
- **Axle 1 & 2** — Tandem steered, non—driven
- **Axle 3 & 4** — Tandem non—steered, driven with reduction: 5.38 to 1
- **Inter—Axle Differential Lock** — Locks axle 3 with axle 4. Operated by a switch from the carrier cab.
- Cross axle lock on axles 3 and 4

■ Suspension

Front — Independent air suspension

Rear — Independent air suspension

■ Tires and Wheels

Front — Four (single) 445/65R22.5 tires on aluminum disc wheels

Rear — Eight (dual) 315/80R22.5 tires on aluminum disc wheels

- Spare tires and wheels — optional
- Tire inflation kit — optional

■ Brakes

Service — Full air anti—lock (ABS) disc brakes on all wheel ends. Dual circuit compressed air system with air dryer.

Parking/Emergency — Spring loaded type, acting on 3rd and 4th axles automatically apply when air pressure drops below 60 psi (413.7kPa) in both circuits.

■ Electrical

Battery — Four batteries provide 24 volt starting and operation, easily accessible battery disconnects, and battery charging posts.

Lights

- Front lighting includes two main daytime running/headlights, two high beam lights, two parking/directional indicators, and three cab marker lights.
- Side lighting includes three parking/directional indicators per side.
- Rear lighting includes two parking/directional indicators, two parking/brake lights, two reverse lights, three marker lights, and a license plate light.
- Other equipment includes hazard/warning system, LED light, instrument panel light, signal horn, carrier cab door courtesy light, and two outrigger LED lights on each side.
- One amber strobe beacon behind the cab
- Compartment lighting inside storage boxes, outrigger control boxes, and fuel fill.

■ Engine

| Specification | Cummins X12 |
|---|--|
| Emissions Compliance Level: | EPA 2021 |
| Maximum Allowable Sulfur Content of Fuel (PPM): | 15 |
| Numbers of cylinders: | 6 |
| Cycle: | 4 |
| Bore and Stroke: inch (mm) | 5.2 x 5.67 in (132 x 144mm) |
| Piston Displacement: in ³ (L) | 720 (11.8L) |
| Max. Brake Horsepower: hp (kW) | 445 (339) @ 1,600 rpm 410 (306) @ 2,000 rpm |
| Peak Torque: ft lb (Nm) | 1,550 (2 102) @ 1,200 rpm |
| Alternator: volts — amps | 12 — 145 |
| Crankcase Capacity: qt (L) | 48 (45.4) |

- Cruise control
 - Cummins X12 three stage engine compression brake
 - Thermostatically controlled, hydraulically driven radiator fan
 - 120 volt engine block heater — X12
 - Ether injection system — optional on X12
 - Grid heater starting aid standard on X12
 - Engine equipped with on-board diagnostics — X12
- (1) Can only be sold and/or operated where EPA2021 on—highway emission standards are accepted.

■ Transmission

Automated — ZF TRAXON (no clutch pedal) manual transmission with 12 forward gears and 2 reverse gears.

Carrier Speeds and Gradeability

| ZF Traxon | | Governed Speed | | Gradeability (At Peak Torque Except Creep at Idle) | |
|---------------|-----------|----------------|------|---|------|
| | | EPA 2021 | | | |
| Gear | Ratio | mph | km/h | EPA 2021 | |
| 12th | 0.77 | 61 | 98 | 1.6 | |
| 11th | 1.00 | 47 | 76 | 2.5 | |
| 10th | 1.30 | 36 | 58 | 3.7 | |
| 9th | 1.68 | 28 | 45 | 5.1 | |
| 8th | 2.19 | 22 | 35 | 6.9 | |
| 7th | 2.83 | 17 | 27 | 9.2 | |
| 6th | 3.53 | 13 | 22 | 11.7 | |
| 5th | 4.57 | 10 | 17 | 15.4 | |
| 4th | 5.94 | 8 | 13 | 20.2 | |
| 3rd | 7.69 | 6 | 10 | 26.3 | |
| 2nd | 9.98 | 5 | 8 | 34.4 | |
| 1st | 12.92 | 4 | 6 | 44.7 | |
| Reverse 1 | | 4 | 6 | 41.6 | |
| Reverse 2 | | 5 | 8 | 32.0 | |
| Creep at idle | 2nd | 9.98 | 2 | 3 | 17.4 |
| | 1st | 12.92 | 1 | 2 | 22.7 |
| | Reverse 1 | 12.03 | 1 | 2 | 21.1 |
| | Reverse 2 | 9.29 | 2 | 3 | 16.1 |

Based on a gross vehicle weight of 107,250 lb (48 647.8kg)

Fuel Tank

- One 95 gal (359.6L) capacity tank
- One 10 gal (37.8L) capacity diesel exhaust fluid (DEF) plastic tank (EPA 2021)

Hydraulic System

All functions are hydraulically powered allowing positive, precise control with independent or simultaneous operation of all functions.

Main Pumps

- Two variable displacement load sense piston pumps that drive the boom hoist, boom extend, winches, and the cooling package fan. One piston pump is engine driven to allow boom and winch operation during pick and carry operations.
- One fixed displacement gear pump for steering
- One fixed displacement gear pump for swing operation
- One fixed displacement gear pump for the outriggers and the upper air conditioner and counterweight removal circuits
- Combined pump capacity of 168 gpm (635.9Lpm)

Hydraulic Reservoir – 128 gal (484.5L) capacity equipped with sight level gauge. Diffusers built in for deaeration.

Filtration – One 10 micron, full flow, return line filter. All oil is filtered prior to return to reservoir. Accessible for easy filter replacement.

Pump Drive

All pumps are mechanically driven by the diesel engine. Main and auxiliary winches, swing, boom hoist, control circuit, and telescope pumps are mounted to an automatic pump disconnect on the rear of the transmission to aid in cold weather starting as well as to reduce pump wear while traveling.

■ Lower Cab and Controls

Environmental Cab — Fully enclosed, single occupancy cab of aluminum construction with acoustical insulation.

Equipped with:

- Tinted and tempered glass windows
- Power left and right door windows for ventilation
- Intermittent windshield wiper and washer
- Six way adjustable and air suspended heated and ventilated driver's seat with seat belt
- Two heated and electrically adjustable side view mirrors with passenger infrared camera
- Engine dependent warm—water heater with air ducts for chest/face, foot, and windshield defroster
- Adjustable sun visor
- LED dome lights
- Fire extinguisher

Air Conditioning — Integral with cab heating system utilizing the same ventilation outlets

- Automatic temperature control

Overhead Console — Located above the sun visor

- AM/FM Bluetooth radio
- Dome light switch
- 12V accessory power outlet

Camera Display — Integrated with right side LCD display

- Displays right side of machine
- Displays rear view
- Displays dolly rear view

Cab Instrumentation — Ergonomically positioned instrumentation for driving including:

- Digital speedometer with odometer, hour meter, trip meter, clock and outside temperature.
- Tachometer
- Fuel and diesel exhaust fluid (DEF) level with warning indicator

Indicator Lights

- Regeneration inhibit
- Check engine
- Stop engine
- Exhaust regeneration
- High exhaust temperature
- Engine air filter high restriction light
- Cruise
- Park brake
- Tire pressure warning
- ABS
- Trailer ABS
- Engine brake level
- Transaxle (cross—axle) differential lock
- Inter—axle differential lock
- Travel mode
- Ride height
- Diesel Exhaust Fluid (DEF)
- Seat belt
- Hill hold start

Dash Mounted Controls For:

- Carrier lights
- Console dimmer switch
- Remote mirror control switches
- Mirror heating switch
- Cab heater/air conditioning switch
- Fresh/Recirculation air switch
- Park brake air valve
- Trailer brake air valve
- Carrier engine ignition switch

Dash Mounted Indicators For:

- Turn signal indication
- High beam headlights

Right Side LCD Display — Ergonomically positioned on the right of driver's dash panel, digital instrumentation and indicators for crane operations including:

- Transmission digital readout
- **Gauges**
 - Engine water temperature
 - Engine oil pressure

Diagnostic Screens

- Engine
- Aftertreatment
- Outriggers
- Tire Pressure Monitoring Screen (TPMS)

Right Side Console — Controls and indicators for:

- Transmission gear shifting
- Diesel particulate filter switch
- Regeneration inhibit switch
- Fan override switch
- ABS Traction control switch
- Transaxle (cross—axle) differential lock switch with indicator light
- Inter—axle differential lock switch with indicator light
- Travel mode switch
- Ride height switch
- Hill hold start switch

Steering Column/Wheel Controls For:

- Turn signal switch
- High beam switch
- Tilt/telescope adjustments
- Cruise Control
- Engine brake control
- Warning horn
- Hazard light switch
- Intermittent windshield wiper and washer

Foot Controls For:

- Carrier service brakes
- Engine throttle

■ Additional Equipment

Standard:

- Aluminum full deck fenders with mud flaps
- Left and right bubble levels
- Air hose connection ports
- Clearance flags
- Five storage compartments
 - Storage compartment behind carrier cab
 - Left and right side ladders
 - Storage box between axles 3 and 4 on the left and right sides
- Pneumatic and electrical quick disconnect connectors mounted on the rear for trailer or boom dolly brakes and lights
- Wireless rigging remote control with digital inclinometer — controls outrigger beams, jacks, boom hoist, main and auxiliary winch.

Optional:

- Rear mounted pintle hook
- Trailer rear view camera

Transport Scenarios – Axle Loads



| Base crane: Includes: 250 lb driver, oversize load signs, two winches with cable followers, 730' wire rope on main winch, 600' wire rope on auxiliary winch, no counterweight, 35–58' two piece offset fly, auxiliary lifting sheave, 60 T hook block, 10 T hookball, and 500 lb rigging | | Gross Vehicle Weight | | Front Tandem | | Rear Tandem | |
|---|--|----------------------|--------|--------------|--------|-------------|--------|
| | | lb | kg | lb | kg | lb | kg |
| | | | 90,118 | 40,877 | 43,957 | 19,938 | 46,161 |
| Add | 4,000 lb counterweight on carrier | 4,000 | 1,814 | 3,108 | 1,410 | 892 | 405 |
| | 6,000 lb counterweight on carrier* | 6,000 | 2,722 | 4,662 | 2,115 | 1,338 | 607 |
| | 8,000 lb counterweight on carrier | 8,000 | 3,629 | 6,216 | 2,820 | 1784 | 809 |
| | 4,000 lb counterweight on carrier rear | 4,000 | 1,814 | -1,607 | -729 | 5,607 | 2,543 |
| | 4,500 lb counterweight on upper | 4,500 | 2,041 | -2,399 | -1,088 | 6,899 | 3,129 |
| Substitute | 9.5'–35'–58' 3 piece offset fly | 531 | 241 | 715 | 324 | -184 | -83 |
| Remove | 35–58' 2 piece offset fly | -2,636 | -1,196 | -2,494 | -1,131 | -142 | -64 |
| | 60 T hook block | -1,150 | -522 | -1,961 | -889 | 811 | 368 |
| | 10 T hookball | -584 | -265 | -996 | -452 | 412 | 187 |

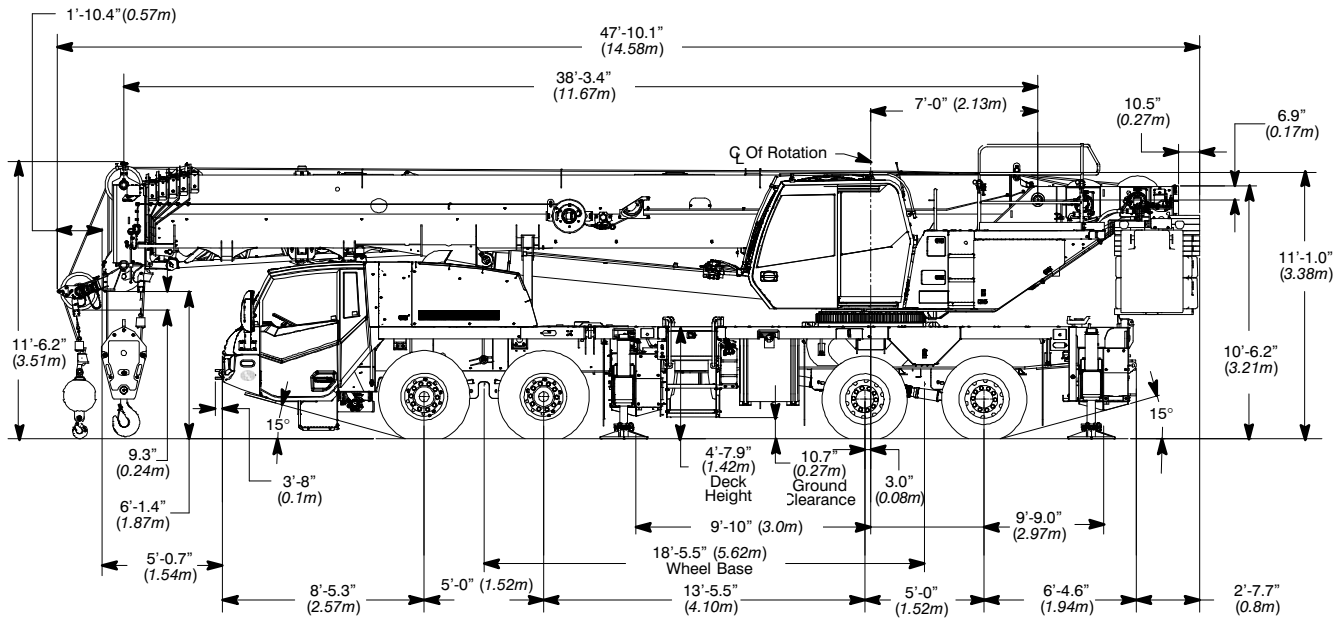
*Requires California Counterweight Package



| Base crane: Includes: 250 lb driver, oversize load signs, two winches with cable followers, 730' wire rope on main winch, 600' wire rope on auxiliary winch, no counterweight, 35–58' two piece offset fly, auxiliary lifting sheave, 60 T hook block, 10 T hookball, 500 lb rigging, and 9,000 lb 3–axle close couple dolly. (Boom extended 2' in travel mode) | | Gross Vehicle Weight | | Front Tandem | | Rear Tandem | | Dolly | |
|--|--|----------------------|--------|--------------|--------|-------------|--------|--------|--------|
| | | lb | kg | lb | kg | lb | kg | lb | kg |
| | | | | 99,180 | 44,987 | 31,262 | 14,180 | 38,118 | 17,290 |
| Add | 36,500 lb of counterweight (28,500 lb on dolly, 8,000 lb on carrier) | 36,500 | 16,556 | 6,217 | 2,820 | 1,783 | 809 | 28,500 | 12,927 |
| | 16,500 lb of counterweight (8,500 lb on dolly, 8,000 lb on carrier) | 16,500 | 7,484 | 6,217 | 2,820 | 1,783 | 809 | 8,500 | 3,856 |
| Substitute | 9.5'–35'–58' 3 piece offset fly | 531 | 241 | 15 | 7 | 15 | 7 | 501 | 227 |
| Remove | 35–58' 2 piece offset fly | -2,636 | -387 | -2,494 | -385 | 142 | 64 | -1,864 | -845 |
| | 60 T hook block | -1,150 | -522 | 126 | 57 | 126 | 57 | -1,402 | -636 |
| | 10 T hookball | -584 | -265 | 64 | 29 | 64 | 29 | -712 | -323 |

General Dimensions

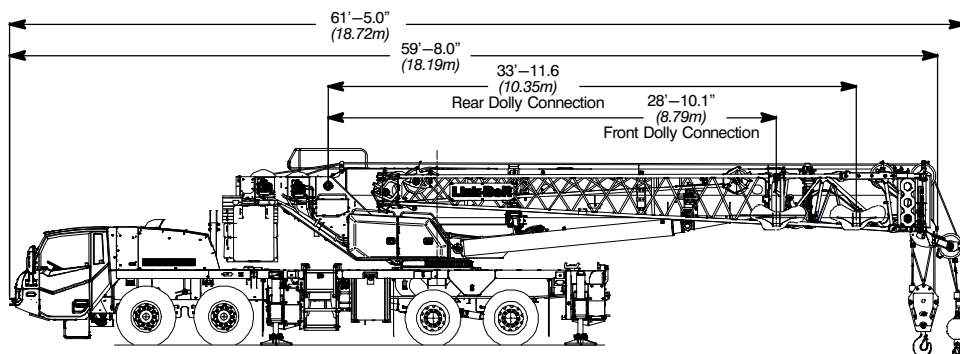
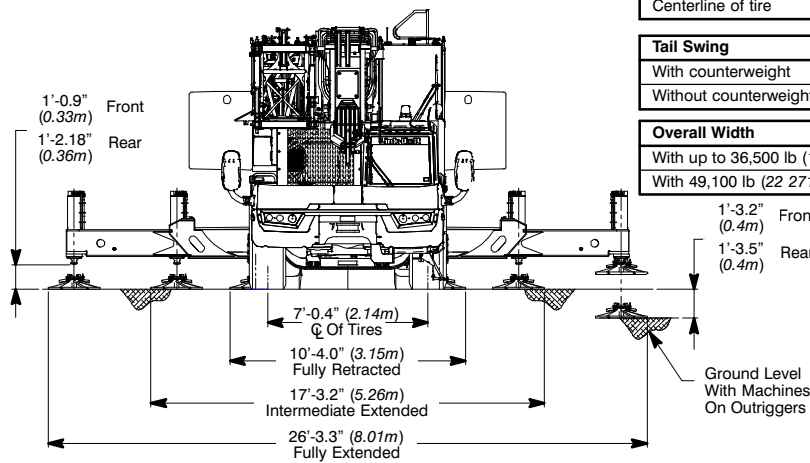
EPA 2021



| Turning Radius | English | Metric |
|-----------------------------------|-----------|--------|
| Wall to wall over carrier | 49'-6.5" | 15.1m |
| Wall to wall over boom | 50'-7.8" | 15.4m |
| Wall to wall over boom attachment | 51'-10.3" | 15.8m |
| Curb to curb | 44'-11.0" | 13.7m |
| Centerline of tire | 44'-0.9" | 13.4m |

| Tail Swing | English | Metric |
|-----------------------|---------|--------|
| With counterweight | 13' 9" | 4.2m |
| Without counterweight | 13' 0" | 4.0m |

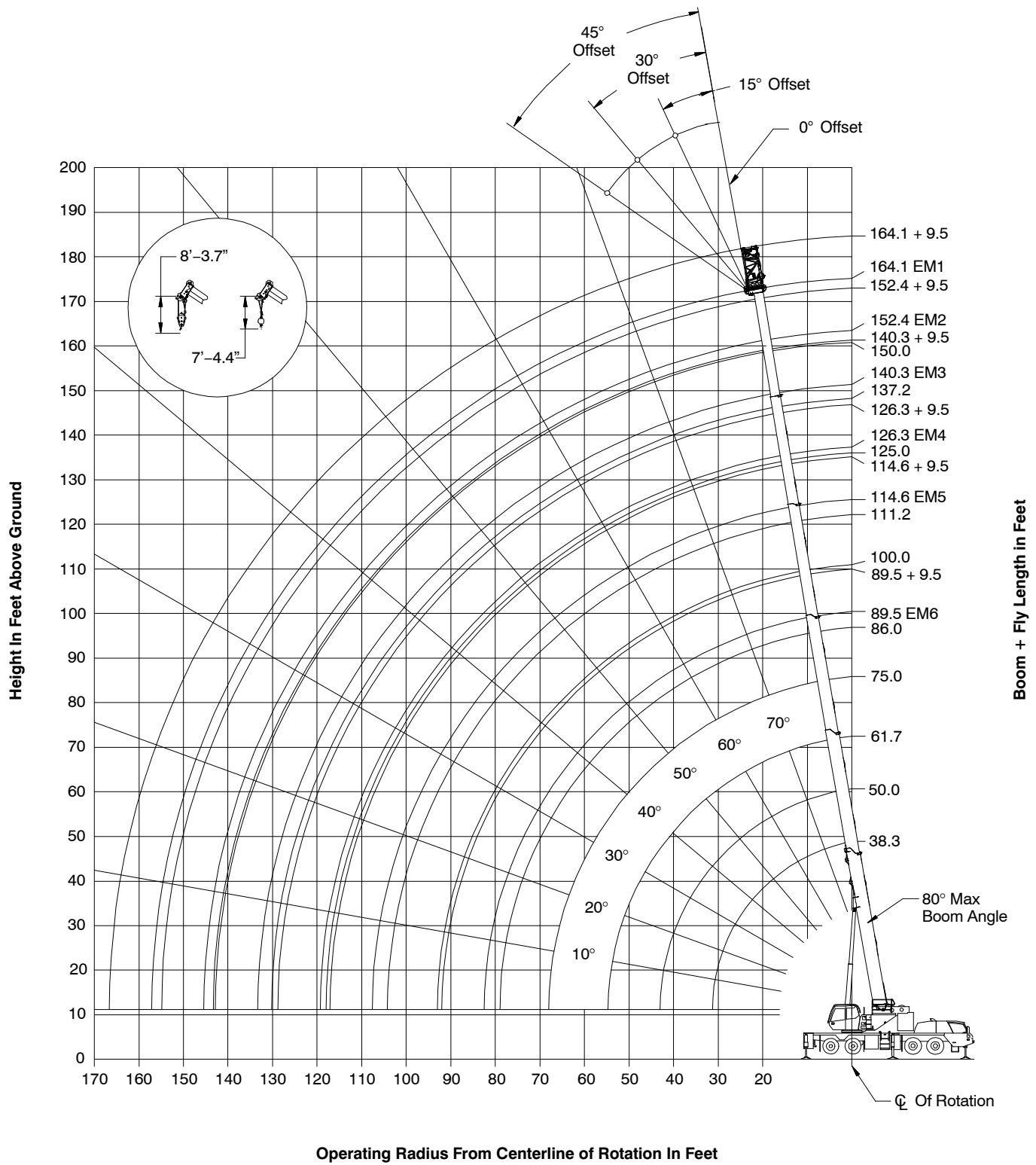
| Overall Width | English | Metric |
|---|---------|--------|
| With up to 36,500 lb (16 556.1kg) counterweight | 8' 6" | 2.6m |
| With 49,100 lb (22 271.4kg) counterweight | 13' 11" | 4.2m |



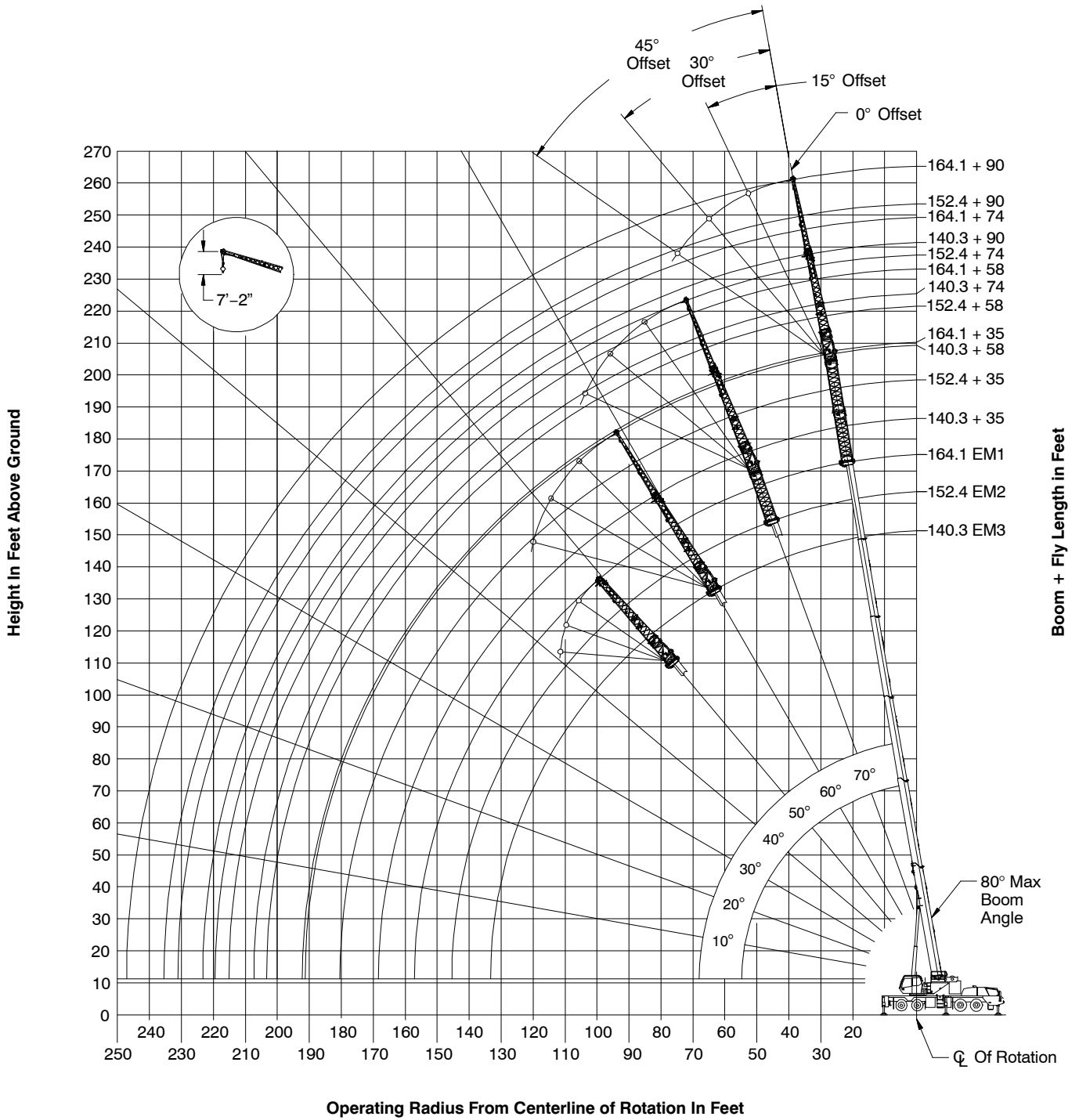
Not To Scale

Working Range Diagram

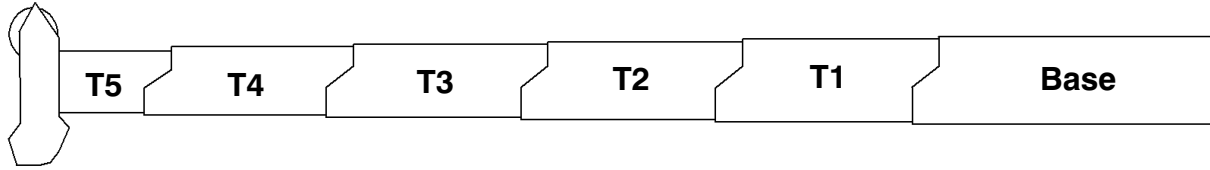
Main Boom + 9.5' Fly



Working Range Diagram Main Boom + Attachments



Boom Extend Modes



| EM 1 | | | | | | | |
|-------------|------------------|-----------------|----------------|------|------|------|------|
| | Boom Length (ft) | Boom Length (m) | Section Length | | | | |
| | | | T5 | T4 | T3 | T2 | T1 |
| * | 38.3 | 11.68 | | | | | |
| | 50 | 15.24 | 50% | | | | |
| * | 61.7 | 18.81 | 100% | | | | |
| | 75 | 22.87 | 100% | 55% | | | |
| * | 86 | 26.22 | 100% | 100% | | | |
| | 100 | 30.49 | 100% | 100% | 56% | | |
| * | 111.2 | 33.90 | 100% | 100% | 100% | | |
| | 125 | 38.11 | 100% | 100% | 100% | 53% | |
| * | 137.2 | 41.83 | 100% | 100% | 100% | 100% | |
| | 150 | 45.73 | 100% | 100% | 100% | 100% | 48% |
| * | 164.1 | 50.03 | 100% | 100% | 100% | 100% | 100% |

| EM 2 | | | | | | | |
|-------------|------------------|-----------------|----------------|------|------|------|------|
| | Boom Length (ft) | Boom Length (m) | Section Length | | | | |
| | | | T5 | T4 | T3 | T2 | T1 |
| * | 38.3 | 11.68 | | | | | |
| * | 50 | 15.24 | 50% | | | | |
| | 60 | 18.29 | 50% | 41% | | | |
| * | 74.3 | 22.65 | 50% | 100% | | | |
| | 85 | 25.91 | 50% | 100% | 43% | | |
| * | 99.5 | 30.34 | 50% | 100% | 100% | | |
| | 110 | 33.54 | 50% | 100% | 100% | 40% | |
| * | 125.5 | 38.26 | 50% | 100% | 100% | 100% | |
| | 140 | 42.68 | 50% | 100% | 100% | 100% | 54% |
| * | 152.4 | 46.46 | 50% | 100% | 100% | 100% | 100% |

| EM 3 | | | | | | | |
|-------------|------------------|-----------------|----------------|-----|------|------|------|
| | Boom Length (ft) | Boom Length (m) | Section Length | | | | |
| | | | T5 | T4 | T3 | T2 | T1 |
| * | 38.3 | 11.68 | | | | | |
| * | 50 | 15.24 | 50% | | | | |
| * | 62.1 | 18.93 | 50% | 50% | | | |
| | 75 | 22.87 | 50% | 50% | 51% | | |
| * | 87.3 | 26.62 | 50% | 50% | 100% | | |
| | 100 | 30.49 | 50% | 50% | 100% | 49% | |
| * | 113.4 | 34.57 | 50% | 50% | 100% | 100% | |
| | 125 | 38.11 | 50% | 50% | 100% | 100% | 43% |
| * | 140.3 | 42.77 | 50% | 50% | 100% | 100% | 100% |

| EM 4 | | | | | | | |
|-------------|------------------|-----------------|----------------|-----|-----|-----|----|
| | Boom Length (ft) | Boom Length (m) | Section Length | | | | |
| | | | T5 | T4 | T3 | T2 | T1 |
| | 38.3 | 11.68 | | | | | |
| | 50 | 15.24 | 50% | | | | |
| | 61.7 | 18.81 | 100% | | | | |
| | 73.8 | 22.50 | 100% | 50% | | | |
| | 86.4 | 26.34 | 100% | 50% | 50% | | |
| | 99.4 | 30.30 | 100% | 50% | 50% | 50% | |
| | 115 | 35.06 | 100% | 50% | 50% | 50% | |
| | 126.3 | 38.51 | 100% | 50% | 50% | 50% | |

| EM 5 | | | | | | | |
|------------------|-----------------|----------------|-----|-----|-----|------|--|
| Boom Length (ft) | Boom Length (m) | Section Length | | | | | |
| | | T5 | T4 | T3 | T2 | T1 | |
| 38.3 | 11.68 | | | | | | |
| 50 | 15.24 | 50% | | | | | |
| 62.1 | 18.93 | 50% | 50% | | | | |
| 74.7 | 22.77 | 50% | 50% | 50% | | | |
| 87.8 | 26.77 | 50% | 50% | 50% | 50% | | |
| 100 | 30.49 | 50% | 50% | 50% | 50% | 46% | |
| 114.6 | 34.94 | 50% | 50% | 50% | 50% | 100% | |

| EM 6 | | | | | | | |
|------------------|-----------------|----------------|-----|-----|-----|-----|--|
| Boom Length (ft) | Boom Length (m) | Section Length | | | | | |
| | | T5 | T4 | T3 | T2 | T1 | |
| 38.3 | 11.68 | | | | | | |
| 50.5 | 15.40 | 0% | 50% | | | | |
| 63 | 19.20 | 0% | 50% | 50% | | | |
| 76.1 | 23.20 | 0% | 50% | 50% | 50% | | |
| 89.5 | 27.29 | 0% | 50% | 50% | 50% | 50% | |

* Denotes boom lengths charted with 35 ft (10.7m), 58 ft (17.7m), 74 ft (22.6m), and 90 ft (27.4m) fly.

Main Boom Lift Capacity Charts

| 16,000 lb Counterweight – Fully Extended Outriggers – 360° Rotation (All Capacities Are Listed In Pounds) | | | | | | | | | | | | |
|--|------------------|-------------|----------|-------------|----------|-----------|---------|------------|---------------|--------------|--------|-------------|
| Radius (ft) | Boom Length (ft) | | | | | | | | | | | Radius (ft) |
| | 38.3 | 49.99-50.45 | 60-63.03 | 73.84-76.05 | 85-89.50 | 99.44-100 | 110-115 | 125-126.34 | 137.20-140.25 | 150.0-152.41 | 164.1 | |
| 10 | 168,800 | 160,700 | 137,600 | | | | | | | | | 10 |
| 12 | 143,800 | 144,200 | 137,600 | 120,400 | | | | | | | | 12 |
| 15 | 115,000 | 116,500 | 115,900 | 113,800 | 91,500 | | | | | | | 15 |
| 20 | 84,400 | 86,700 | 87,000 | 86,100 | 84,300 | 65,800 | 50,500 | | | | | 20 |
| 25 | 65,200 | 67,900 | 68,500 | 68,000 | 68,900 | 65,800 | 50,500 | 38,800 | 25,400 | | | 25 |
| 30 | 47,200 | 51,200 | 53,600 | 54,000 | 53,500 | 52,400 | 50,500 | 38,800 | 30,800 | 24,400 | | 30 |
| 35 | | 39,500 | 41,300 | 41,700 | 41,200 | 41,500 | 40,100 | 38,800 | 30,800 | 24,400 | 19,600 | 35 |
| 40 | | 31,100 | 33,000 | 33,400 | 33,600 | 34,000 | 32,900 | 32,900 | 30,800 | 24,400 | 19,600 | 40 |
| 45 | | | 27,000 | 27,600 | 28,600 | 28,400 | 28,000 | 28,000 | 26,700 | 24,400 | 19,600 | 45 |
| 50 | | | 22,700 | 24,000 | 24,100 | 23,900 | 24,200 | 24,100 | 23,700 | 22,500 | 19,600 | 50 |
| 55 | | | 18,900 | 20,500 | 20,600 | 21,100 | 21,100 | 20,600 | 20,200 | 19,500 | 18,900 | 55 |
| 60 | | | | 17,600 | 18,200 | 18,200 | 18,200 | 17,700 | 17,400 | 16,600 | 16,000 | 60 |
| 65 | | | | 15,200 | 15,800 | 15,800 | 15,800 | 15,400 | 15,100 | 14,400 | 13,800 | 65 |
| 70 | | | | | 13,800 | 13,900 | 13,900 | 13,500 | 13,100 | 12,500 | 11,800 | 70 |
| 75 | | | | | 12,100 | 12,200 | 12,200 | 11,800 | 11,500 | 10,800 | 10,200 | 75 |
| 80 | | | | | 9,400 | 10,800 | 10,800 | 10,400 | 10,000 | 9,400 | 8,800 | 80 |
| 85 | | | | | | 9,500 | 9,600 | 9,100 | 8,800 | 8,200 | 7,600 | 85 |
| 90 | | | | | | 8,400 | 8,500 | 8,100 | 7,800 | 7,100 | 6,500 | 90 |
| 95 | | | | | | | 7,500 | 7,100 | 6,800 | 6,200 | 5,600 | 95 |
| 100 | | | | | | | 6,600 | 6,300 | 6,000 | 5,400 | 4,800 | 100 |
| 105 | | | | | | | 4,100 | 5,500 | 5,200 | 4,600 | 4,100 | 105 |
| 110 | | | | | | | | 4,800 | 4,600 | 4,000 | 3,400 | 110 |
| 115 | | | | | | | | 4,200 | 3,900 | 3,400 | 2,800 | 115 |
| 120 | | | | | | | | | 3,400 | 2,800 | 2,300 | 120 |
| 125 | | | | | | | | | 2,900 | 2,300 | 1,800 | 125 |
| 130 | | | | | | | | | 2,400 | 1,800 | 1,300 | 130 |
| 135 | | | | | | | | | | 1,400 | | 135 |
| 140 | | | | | | | | | | 1,000 | | 140 |

This information is not for crane operation. Operator must refer to the in-cab information for crane operation. Rated lifting capacities shown on fully extended outriggers do not exceed 85% of the tipping loads and on tires do not exceed 75% of the tipping loads.

| 20,000 lb Counterweight – Fully Extended Outriggers – 360° Rotation (All Capacities Are Listed In Pounds) | | | | | | | | | | | | |
|--|------------------|---------|---------|-----------|---------|----------|---------|-----------|-------------|-------------|--------|-------------|
| Radius (ft) | Boom Length (ft) | | | | | | | | | | | Radius (ft) |
| | 38.3 | 49-50.5 | 60-63 | 73.8-76.1 | 85-89.5 | 99.4-100 | 110-115 | 125-126.3 | 137.2-140.2 | 150.0-152.4 | 164.1 | |
| 10 | 169,200 | 160,700 | 137,600 | | | | | | | | | 10 |
| 12 | 147,100 | 144,200 | 137,600 | 120,400 | | | | | | | | 12 |
| 15 | 117,700 | 116,500 | 118,400 | 113,600 | 91,500 | | | | | | | 15 |
| 20 | 86,500 | 86,700 | 89,100 | 88,100 | 86,300 | 65,800 | 50,500 | | | | | 20 |
| 25 | 67,000 | 67,900 | 70,200 | 69,700 | 70,500 | 65,800 | 50,500 | 38,800 | 25,400 | | | 25 |
| 30 | 50,900 | 51,100 | 57,100 | 57,700 | 57,200 | 56,100 | 50,500 | 38,800 | 30,800 | 24,400 | | 30 |
| 35 | | 39,400 | 44,300 | 44,600 | 44,200 | 43,200 | 42,200 | 38,800 | 30,800 | 24,400 | 19,600 | 35 |
| 40 | | 31,100 | 35,400 | 35,900 | 36,000 | 35,600 | 35,300 | 34,600 | 30,800 | 24,400 | 19,600 | 40 |
| 45 | | | 26,100 | 29,600 | 30,300 | 30,200 | 30,100 | 29,700 | 28,300 | 24,400 | 19,600 | 45 |
| 50 | | | 24,300 | 25,600 | 26,000 | 25,700 | 25,300 | 25,900 | 25,400 | 23,600 | 19,600 | 50 |
| 55 | | | 20,500 | 22,100 | 22,200 | 22,000 | 22,400 | 22,200 | 21,900 | 21,200 | 19,600 | 55 |
| 60 | | | | 19,100 | 19,200 | 19,700 | 19,700 | 19,200 | 18,900 | 18,200 | 17,600 | 60 |
| 65 | | | | 16,600 | 17,100 | 17,300 | 17,300 | 16,800 | 16,500 | 15,800 | 15,300 | 65 |
| 70 | | | | | 15,200 | 15,300 | 15,300 | 14,900 | 14,500 | 13,900 | 13,300 | 70 |
| 75 | | | | | 13,400 | 13,500 | 13,500 | 13,100 | 12,800 | 12,100 | 11,500 | 75 |
| 80 | | | | | 10,600 | 12,000 | 12,000 | 11,600 | 11,300 | 10,600 | 10,000 | 80 |
| 85 | | | | | | 10,600 | 10,700 | 10,300 | 9,900 | 9,300 | 8,700 | 85 |
| 90 | | | | | | 9,500 | 9,500 | 9,100 | 8,800 | 8,200 | 7,600 | 90 |
| 95 | | | | | | | 8,500 | 8,100 | 7,800 | 7,200 | 6,600 | 95 |
| 100 | | | | | | | 7,600 | 7,200 | 6,900 | 6,300 | 5,700 | 100 |
| 105 | | | | | | | 5,000 | 6,400 | 6,100 | 5,500 | 4,900 | 105 |
| 110 | | | | | | | | 5,700 | 5,400 | 4,800 | 4,200 | 110 |
| 115 | | | | | | | | 5,000 | 4,700 | 4,200 | 3,600 | 115 |
| 120 | | | | | | | | | 4,100 | 3,600 | 3,000 | 120 |
| 125 | | | | | | | | | 3,600 | 3,000 | 2,500 | 125 |
| 130 | | | | | | | | | 3,100 | 2,500 | 2,000 | 130 |
| 135 | | | | | | | | | | 2,100 | 1,600 | 135 |
| 140 | | | | | | | | | | 1,700 | 1,200 | 140 |

This information is not for crane operation. Operator must refer to the in-cab information for crane operation. Rated lifting capacities shown on fully extended outriggers do not exceed 85% of the tipping loads and on tires do not exceed 75% of the tipping loads.

| 36,500 lb Counterweight – Fully Extended Outriggers – 360° Rotation | | | | | | | | | | | | |
|--|-------------------------|-------------------------|-----------------|-------------------------|-----------------|-----------------------|----------------|------------------------|---------------------------|------------------------|--------------|------------------------|
| (All Capacities Are Listed In Pounds) | | | | | | | | | | | | |
| Radius (ft) | Boom Length (ft) | | | | | | | | | | | Radius (ft) |
| | 38.3 | 49.99- 50.45 | 60-63.03 | 73.84- 76.05 | 85-89.50 | 99.44- 100 | 110-115 | 125- 126.34 | 137.20- 140.25 | 150- 152.41 | 164.1 | |
| 10 | 171,100 | 160,700 | 137,600 | | | | | | | | | 10 |
| 12 | 154,700 | 147,300 | 137,600 | 120,400 | | | | | | | | 12 |
| 15 | 128,900 | 130,100 | 125,000 | 120,400 | 91,500 | | | | | | | 15 |
| 20 | 95,200 | 97,300 | 97,400 | 96,200 | 91,500 | 65,800 | 50,500 | | | | | 20 |
| 25 | 74,100 | 76,600 | 77,200 | 76,500 | 75,100 | 65,800 | 50,500 | 38,800 | 25,400 | | | 25 |
| 30 | 59,500 | 62,300 | 63,100 | 62,700 | 63,600 | 62,500 | 50,500 | 38,800 | 30,800 | 24,400 | | 30 |
| 35 | | 51,900 | 52,800 | 54,100 | 53,600 | 52,600 | 46,400 | 38,800 | 30,800 | 24,400 | 19,600 | 35 |
| 40 | | 43,100 | 45,600 | 46,000 | 45,500 | 44,600 | 41,900 | 38,300 | 30,800 | 24,400 | 19,600 | 40 |
| 45 | | | 37,700 | 38,300 | 37,800 | 36,900 | 36,100 | 35,300 | 30,800 | 24,400 | 19,600 | 45 |
| 50 | | | 31,900 | 32,400 | 32,000 | 32,200 | 31,800 | 31,400 | 29,600 | 24,400 | 19,600 | 50 |
| 55 | | | 27,300 | 27,800 | 28,000 | 28,500 | 27,500 | 26,900 | 27,200 | 24,400 | 19,600 | 55 |
| 60 | | | | 24,200 | 25,000 | 24,900 | 24,300 | 24,000 | 23,600 | 23,100 | 19,600 | 60 |
| 65 | | | | 21,100 | 22,300 | 21,900 | 21,800 | 21,400 | 21,400 | 21,300 | 19,600 | 65 |
| 70 | | | | | 19,700 | 19,600 | 19,300 | 19,900 | 19,500 | 18,900 | 18,200 | 70 |
| 75 | | | | | 17,600 | 17,500 | 17,200 | 17,700 | 17,400 | 16,800 | 16,100 | 75 |
| 80 | | | | | 15,000 | 16,100 | 16,000 | 15,900 | 15,700 | 15,100 | 14,500 | 80 |
| 85 | | | | | | 14,800 | 14,800 | 14,500 | 14,200 | 13,500 | 13,000 | 85 |
| 90 | | | | | | 13,400 | 13,400 | 13,100 | 12,800 | 12,200 | 11,600 | 90 |
| 95 | | | | | | | 12,200 | 11,800 | 11,600 | 11,000 | 10,400 | 95 |
| 100 | | | | | | | 11,100 | 10,700 | 10,500 | 9,900 | 9,300 | 100 |
| 105 | | | | | | | 8,400 | 9,700 | 9,500 | 8,900 | 8,400 | 105 |
| 110 | | | | | | | | 8,900 | 8,600 | 8,100 | 7,500 | 110 |
| 115 | | | | | | | | 8,100 | 7,800 | 7,300 | 6,700 | 115 |
| 120 | | | | | | | | | 7,100 | 6,500 | 6,000 | 120 |
| 125 | | | | | | | | | 6,400 | 5,900 | 5,400 | 125 |
| 130 | | | | | | | | | 5,900 | 5,300 | 4,800 | 130 |
| 135 | | | | | | | | | | 4,700 | 4,200 | 135 |
| 140 | | | | | | | | | | 4,200 | 3,700 | 140 |
| 145 | | | | | | | | | | 2,700 | 3,200 | 145 |
| 150 | | | | | | | | | | | 2,800 | 150 |
| 155 | | | | | | | | | | | 2,400 | 155 |

This information is not for crane operation. Operator must refer to the in-cab information for crane operation. Rated lifting capacities shown on fully extended outriggers do not exceed 85% of the tipping loads and on tires do not exceed 75% of the tipping loads.

| 49,100 lb Counterweight – Fully Extended Outriggers – 360° Rotation (All Capacities Are Listed In Pounds) | | | | | | | | | | | | |
|--|------------------|-------------|----------|-------------|----------|-----------|---------|------------|---------------|------------|--------|-------------|
| Radius (ft) | Boom Length (ft) | | | | | | | | | | | Radius (ft) |
| | 38.3 | 49.99-50.45 | 60-63.03 | 73.84-76.05 | 85-89.50 | 99.44-100 | 110-115 | 125-126.34 | 137.20-140.25 | 150-152.41 | 164.1 | |
| 7 | 240,000 | | | | | | | | | | | 7 |
| 8 | 205,000 | | | | | | | | | | | 8 |
| 9 | 180,000 | | | | | | | | | | | 9 |
| 10 | 172,400 | 160,700 | 137,600 | | | | | | | | | 10 |
| 12 | 156,100 | 147,300 | 137,600 | 120,400 | | | | | | | | 12 |
| 15 | 135,900 | 130,800 | 125,000 | 120,400 | 91,500 | | | | | | | 15 |
| 20 | 101,800 | 103,900 | 103,800 | 102,500 | 91,500 | 65,800 | 50,500 | | | | | 20 |
| 25 | 79,500 | 81,900 | 82,400 | 81,600 | 80,100 | 65,800 | 50,500 | 38,800 | 25,400 | | | 25 |
| 30 | 64,100 | 66,800 | 67,500 | 67,100 | 65,900 | 65,800 | 50,500 | 38,800 | 30,800 | 24,400 | | 30 |
| 35 | | 55,800 | 56,600 | 57,400 | 57,400 | 56,400 | 46,400 | 38,800 | 30,800 | 24,400 | 19,600 | 35 |
| 40 | | 47,400 | 48,700 | 49,700 | 49,300 | 48,300 | 41,900 | 38,300 | 30,800 | 24,400 | 19,600 | 40 |
| 45 | | | 42,900 | 43,300 | 42,900 | 42,100 | 38,000 | 35,300 | 30,800 | 24,400 | 19,600 | 45 |
| 50 | | | 37,600 | 38,000 | 37,700 | 36,900 | 34,700 | 33,100 | 29,600 | 24,400 | 19,600 | 50 |
| 55 | | | 31,300 | 32,900 | 32,700 | 31,800 | 31,100 | 30,800 | 27,500 | 24,400 | 19,600 | 55 |
| 60 | | | | 28,800 | 28,600 | 28,700 | 28,500 | 27,900 | 25,700 | 23,800 | 19,600 | 60 |
| 65 | | | | 25,400 | 25,100 | 25,800 | 25,100 | 24,500 | 24,000 | 22,500 | 19,600 | 65 |
| 70 | | | | | 22,300 | 23,200 | 22,400 | 21,700 | 22,100 | 21,500 | 19,600 | 70 |
| 75 | | | | | 21,100 | 20,800 | 20,000 | 19,600 | 19,700 | 20,200 | 19,000 | 75 |
| 80 | | | | | 18,300 | 18,700 | 18,700 | 18,400 | 17,700 | 18,300 | 17,700 | 80 |
| 85 | | | | | | 16,900 | 16,900 | 16,700 | 16,600 | 16,500 | 15,900 | 85 |
| 90 | | | | | | 15,400 | 15,400 | 15,800 | 15,600 | 15,100 | 14,500 | 90 |
| 95 | | | | | | | 14,000 | 14,600 | 14,300 | 13,700 | 13,200 | 95 |
| 100 | | | | | | | 12,800 | 13,300 | 13,100 | 12,500 | 11,900 | 100 |
| 105 | | | | | | | 10,800 | 12,200 | 11,900 | 11,400 | 10,800 | 105 |
| 110 | | | | | | | | 11,200 | 10,900 | 10,400 | 9,900 | 110 |
| 115 | | | | | | | | 10,300 | 10,000 | 9,500 | 9,000 | 115 |
| 120 | | | | | | | | | 9,200 | 8,700 | 8,100 | 120 |
| 125 | | | | | | | | | 8,500 | 7,900 | 7,400 | 125 |
| 130 | | | | | | | | | 7,700 | 7,200 | 6,700 | 130 |
| 135 | | | | | | | | | | 6,600 | 6,100 | 135 |
| 140 | | | | | | | | | | 6,000 | 5,500 | 140 |
| 145 | | | | | | | | | | 4,400 | 5,000 | 145 |
| 150 | | | | | | | | | | | 4,500 | 150 |
| 155 | | | | | | | | | | | 4,000 | 155 |

This information is not for crane operation. Operator must refer to the in-cab information for crane operation. Rated lifting capacities shown on fully extended outriggers do not exceed 85% of the tipping loads and on tires do not exceed 75% of the tipping loads.

Main Boom + Offset Fly Lift Capacity Charts

| 49,100 lb Counterweight – Fully Extended Outriggers – 360° Rotation (All Capacities Are Listed In Pounds) | | | | | | | | | | | | |
|--|---|---------|--------|-----------|---------|----------|---------|-----------|-------------|------------|--------|----------------|
| Radius (ft) | Main Boom + 9.5 ft Manual Offset Fly (0°, 15°, 30°, 45° Offset) | | | | | | | | | | | Radius (ft) |
| | Boom Length (ft) | | | | | | | | | | | |
| | 38.3 | 49-50.5 | 60-63 | 73.8-76.1 | 85-89.5 | 99.4-100 | 110-115 | 125-126.3 | 137.2-140.2 | 150-152.41 | 164.1 | |
| 10 | 41,100 | 42,200 | 47,700 | | | | | | | | | 10 |
| 12 | 40,100 | 41,300 | 42,100 | 47,600 | | | | | | | | 12 |
| 15 | 38,800 | 40,100 | 41,000 | 41,600 | 47,600 | | | | | | | 15 |
| 20 | 37,000 | 38,400 | 39,400 | 40,200 | 40,700 | 40,700 | 40,000 | | | | | 20 |
| 25 | 35,700 | 37,000 | 38,100 | 38,900 | 39,600 | 39,700 | 39,800 | 30,700 | 20,700 | | | 25 |
| 30 | 34,400 | 36,100 | 37,000 | 37,900 | 38,600 | 38,800 | 39,800 | 30,700 | 25,700 | 18,600 | | 30 |
| 35 | 34,200 | 34,700 | 36,200 | 37,000 | 37,700 | 38,000 | 39,100 | 30,700 | 25,700 | 20,500 | 16,000 | 35 |
| 40 | 34,200 | 34,400 | 35,100 | 36,300 | 37,000 | 36,000 | 38,300 | 30,700 | 25,700 | 20,500 | 16,000 | 40 |
| 45 | | 34,100 | 34,400 | 35,400 | 36,400 | 34,200 | 37,100 | 30,700 | 25,700 | 20,500 | 16,000 | 45 |
| 50 | | 34,100 | 34,300 | 34,400 | 35,400 | 32,500 | 35,200 | 29,700 | 25,700 | 20,500 | 16,000 | 50 |
| 55 | | | 31,900 | 31,500 | 30,400 | 31,000 | 33,100 | 25,500 | 25,700 | 20,500 | 16,000 | 55 |
| 60 | | | 27,900 | 27,400 | 28,000 | 27,300 | 33,400 | 25,600 | 23,800 | 20,500 | 16,000 | 60 |
| 65 | | | 24,600 | 25,100 | 24,900 | 24,000 | 26,500 | 23,900 | 22,100 | 20,500 | 16,000 | 65 |
| 70 | | | | 22,700 | 22,100 | 21,900 | 23,100 | 21,100 | 20,700 | 19,300 | 16,000 | 70 |
| 75 | | | | 20,300 | 19,700 | 19,800 | 20,800 | 18,700 | 18,900 | 18,000 | 16,000 | 75 |
| 80 | | | | | 17,700 | 17,700 | 19,300 | 16,800 | 16,900 | 16,600 | 16,000 | 80 |
| 85 | | | | | 16,200 | 16,000 | 17,300 | 15,700 | 15,300 | 15,700 | 15,200 | 85 |
| 90 | | | | | 14,100 | 15,100 | 15,700 | 14,400 | 14,300 | 14,300 | 13,700 | 90 |
| 95 | | | | | | 13,700 | 14,800 | 13,200 | 13,400 | 12,900 | 12,300 | 95 |
| 100 | | | | | | 12,500 | 13,500 | 12,500 | 12,300 | 11,700 | 11,100 | 100 |
| 105 | | | | | | | 12,300 | 11,600 | 11,200 | 10,600 | 10,000 | 105 |
| 110 | | | | | | | 11,200 | 10,600 | 10,200 | 9,600 | 9,000 | 110 |
| 115 | | | | | | | 10,300 | 9,700 | 9,400 | 8,700 | 8,100 | 115 |
| 120 | | | | | | | 8,600 | 8,900 | 8,600 | 7,900 | 7,300 | 120 |
| 125 | | | | | | | | 8,200 | 7,800 | 7,200 | 6,600 | 125 |
| 130 | | | | | | | | | 7,200 | 6,500 | 5,900 | 130 |
| 135 | | | | | | | | | 6,600 | 5,900 | 5,300 | 135 |
| 140 | | | | | | | | | 4,900 | 5,400 | 4,800 | 140 |
| 145 | | | | | | | | | | 4,800 | 4,200 | 145 |
| 150 | | | | | | | | | | 4,400 | 3,800 | 150 |
| 155 | | | | | | | | | | | 3,300 | 155 |
| 160 | | | | | | | | | | | 2,900 | 160 |

This information is not for crane operation. Operator must refer to the in-cab information for crane operation. Rated lifting capacities shown on fully extended outriggers do not exceed 85% of the tipping loads and on tires do not exceed 75% of the tipping loads.

| 16,000 lb Counterweight – Fully Extended Outriggers – 360° Rotation (All Capacities Are Listed In Pounds) | | | | | | | | | |
|--|-------------------------|--------|--------|--------|-------------------------|-------|-------|-------|-------------|
| 164.1 ft Main Boom Length | | | | | | | | | |
| Radius (ft) | 35 ft Manual Offset Fly | | | | 58 ft Manual Offset Fly | | | | Radius (ft) |
| | 0° | 15° | 30° | 45° | 0° | 15° | 30° | 45° | |
| 40 | 11,000 | | | | | | | | 40 |
| 45 | 11,000 | | | | | | | | 45 |
| 50 | 11,000 | | | | 7,400 | | | | 50 |
| 55 | 11,000 | 11,500 | | | 7,400 | | | | 55 |
| 60 | 11,000 | 11,500 | | | 7,400 | | | | 60 |
| 65 | 11,000 | 11,500 | 11,300 | | 7,400 | 7,800 | | | 65 |
| 70 | 11,000 | 11,500 | 11,100 | 10,100 | 7,400 | 7,600 | | | 70 |
| 75 | 10,000 | 11,000 | 11,000 | 9,900 | 7,400 | 7,400 | | | 75 |
| 80 | 8,600 | 9,500 | 10,300 | 9,700 | 7,400 | 7,300 | 6,200 | | 80 |
| 85 | 7,300 | 8,200 | 8,900 | 9,500 | 7,400 | 7,100 | 6,100 | | 85 |
| 90 | 6,300 | 7,100 | 7,700 | 8,300 | 6,900 | 7,000 | 6,000 | 5,300 | 90 |
| 95 | 5,300 | 6,100 | 6,700 | 7,200 | 5,900 | 6,900 | 5,900 | 5,200 | 95 |
| 100 | 4,500 | 5,200 | 5,700 | 6,200 | 5,100 | 6,200 | 5,800 | 5,100 | 100 |
| 105 | 3,800 | 4,400 | 4,900 | 5,300 | 4,300 | 5,400 | 5,700 | 5,100 | 105 |
| 110 | 3,100 | 3,700 | 4,100 | 4,500 | 3,700 | 4,600 | 5,500 | 5,000 | 110 |
| 115 | 2,500 | 3,000 | 3,500 | 3,800 | 3,100 | 4,000 | 4,800 | 5,000 | 115 |
| 120 | 1,900 | 2,400 | 2,800 | 3,100 | 2,500 | 3,400 | 4,100 | 4,700 | 120 |
| 125 | 1,500 | 1,900 | 2,300 | 2,500 | 2,000 | 2,800 | 3,500 | 4,000 | 125 |
| 130 | 1,000 | 1,400 | 1,800 | 2,000 | 1,600 | 2,300 | 2,900 | 3,400 | 130 |
| 135 | | 1,000 | 1,300 | 1,500 | 1,100 | 1,800 | 2,400 | 2,800 | 135 |
| 140 | | | | 1,000 | | 1,400 | 1,900 | 2,300 | 140 |
| 145 | | | | | | 1,000 | 1,500 | 1,800 | 145 |
| 150 | | | | | | | 1,100 | 1,400 | 150 |
| 155 | | | | | | | | 900 | 155 |

This information is not for crane operation. Operator must refer to the in-cab information for crane operation. Rated lifting capacities shown on fully extended outriggers do not exceed 85% of the tipping loads and on tires do not exceed 75% of the tipping loads.

16,000 lb Counterweight – Fully Extended Outriggers – 360° Rotation
(All Capacities Are Listed In Pounds)

164.1 ft Main Boom Length

| Radius (ft) | 74 ft Manual Offset Fly | | | | 90 ft Manual Offset Fly | | | | Radius (ft) |
|----------------|-------------------------|-------|-------|-------|-------------------------|-------|-------|-------|----------------|
| | 0° | 15° | 30° | 45° | 0° | 15° | 30° | 45° | |
| 50 | 5,300 | | | | | | | | 50 |
| 55 | 5,300 | | | | | | | | 55 |
| 60 | 5,300 | | | | 4,000 | | | | 60 |
| 65 | 5,300 | | | | 4,000 | | | | 65 |
| 70 | 5,300 | 5,300 | | | 4,000 | | | | 70 |
| 75 | 5,300 | 5,200 | | | 4,000 | | | | 75 |
| 80 | 5,300 | 5,100 | | | 4,000 | 4,100 | | | 80 |
| 85 | 5,300 | 4,900 | 4,400 | | 4,000 | 4,000 | | | 85 |
| 90 | 5,300 | 4,800 | 4,300 | 3,900 | 4,000 | 3,900 | | | 90 |
| 95 | 5,300 | 4,700 | 4,200 | 3,800 | 4,000 | 3,800 | 3,500 | | 95 |
| 100 | 5,200 | 4,600 | 4,100 | 3,700 | 4,000 | 3,700 | 3,300 | 3,100 | 100 |
| 105 | 4,400 | 4,500 | 4,000 | 3,600 | 4,000 | 3,500 | 3,200 | 3,000 | 105 |
| 110 | 3,700 | 4,300 | 3,900 | 3,600 | 3,700 | 3,400 | 3,100 | 3,000 | 110 |
| 115 | 3,100 | 4,000 | 3,800 | 3,500 | 3,100 | 3,300 | 3,100 | 2,900 | 115 |
| 120 | 2,600 | 3,400 | 3,700 | 3,400 | 2,600 | 3,200 | 3,000 | 2,800 | 120 |
| 125 | 2,000 | 2,900 | 3,600 | 3,400 | 2,000 | 2,900 | 2,900 | 2,700 | 125 |
| 130 | 1,600 | 2,400 | 3,000 | 3,300 | 1,600 | 2,400 | 2,800 | 2,600 | 130 |
| 135 | 1,200 | 1,900 | 2,500 | 3,000 | 1,200 | 1,900 | 2,600 | 2,600 | 135 |
| 140 | | 1,400 | 2,000 | 2,400 | | 1,500 | 2,100 | 2,500 | 140 |
| 145 | | 1,000 | 1,600 | 2,000 | | 1,100 | 1,600 | 2,000 | 145 |
| 150 | | | 1,200 | 1,500 | | | 1,200 | 1,600 | 150 |
| 155 | | | | 1,100 | | | | 1,200 | 155 |

This information is not for crane operation. Operator must refer to the in-cab information for crane operation. Rated lifting capacities shown on fully extended outriggers do not exceed 85% of the tipping loads and on tires do not exceed 75% of the tipping loads.

| 36,500 lb Counterweight – Fully Extended Outriggers – 360° Rotation (All Capacities Are Listed In Pounds) | | | | | | | | | |
|--|-------------------------|--------|--------|--------|-------------------------|-------|-------|-------|-------------|
| 164.1 ft Main Boom Length | | | | | | | | | |
| Radius (ft) | 35 ft Manual Offset Fly | | | | 58 ft Manual Offset Fly | | | | Radius (ft) |
| | 0° | 15° | 30° | 45° | 0° | 15° | 30° | 45° | |
| 40 | 11,000 | | | | | | | | 40 |
| 45 | 11,000 | | | | | | | | 45 |
| 50 | 11,000 | | | | 7,400 | | | | 50 |
| 55 | 11,000 | 11,500 | | | 7,400 | | | | 55 |
| 60 | 11,000 | 11,500 | | | 7,400 | | | | 60 |
| 65 | 11,000 | 11,500 | 11,300 | | 7,400 | 7,800 | | | 65 |
| 70 | 11,000 | 11,500 | 11,100 | 10,100 | 7,400 | 7,600 | | | 70 |
| 75 | 11,000 | 11,500 | 11,000 | 9,900 | 7,400 | 7,400 | | | 75 |
| 80 | 11,000 | 11,500 | 10,800 | 9,700 | 7,400 | 7,300 | 6,200 | | 80 |
| 85 | 11,000 | 11,500 | 10,700 | 9,600 | 7,400 | 7,100 | 6,100 | | 85 |
| 90 | 11,000 | 11,500 | 10,500 | 9,500 | 7,400 | 7,000 | 6,000 | 5,300 | 90 |
| 95 | 10,100 | 10,800 | 10,300 | 9,300 | 7,400 | 6,900 | 5,900 | 5,200 | 95 |
| 100 | 9,000 | 9,700 | 10,100 | 9,200 | 7,400 | 6,700 | 5,800 | 5,100 | 100 |
| 105 | 8,000 | 8,700 | 9,200 | 9,100 | 7,400 | 6,600 | 5,700 | 5,100 | 105 |
| 110 | 7,200 | 7,800 | 8,200 | 8,600 | 7,400 | 6,400 | 5,600 | 5,000 | 110 |
| 115 | 6,400 | 6,900 | 7,400 | 7,700 | 7,000 | 6,300 | 5,500 | 5,000 | 115 |
| 120 | 5,700 | 6,200 | 6,600 | 6,800 | 6,200 | 6,200 | 5,400 | 4,900 | 120 |
| 125 | 5,000 | 5,500 | 5,900 | 6,100 | 5,600 | 6,100 | 5,300 | 4,900 | 125 |
| 130 | 4,500 | 4,900 | 5,200 | 5,400 | 5,000 | 5,700 | 5,300 | 4,800 | 130 |
| 135 | 3,900 | 4,300 | 4,600 | 4,800 | 4,400 | 5,100 | 5,200 | 4,800 | 135 |
| 140 | 3,400 | 3,800 | 4,000 | 4,200 | 3,900 | 4,600 | 5,100 | 4,800 | 140 |
| 145 | 2,900 | 3,300 | 3,500 | 3,600 | 3,500 | 4,000 | 4,500 | 4,700 | 145 |
| 150 | 2,500 | 2,800 | 3,000 | 3,100 | 3,000 | 3,600 | 4,000 | 4,300 | 150 |
| 155 | 2,100 | 2,400 | 2,600 | 2,600 | 2,600 | 3,100 | 3,500 | 3,800 | 155 |
| 160 | 1,700 | 2,000 | 2,100 | | 2,200 | 2,700 | 3,100 | 3,300 | 160 |
| 165 | 1,300 | 1,600 | 1,700 | | 1,900 | 2,300 | 2,700 | 2,800 | 165 |
| 170 | 1,000 | 1,200 | 1,300 | | 1,500 | 2,000 | 2,300 | 2,400 | 170 |
| 175 | | | 900 | | 1,200 | 1,600 | 1,900 | 2,000 | 175 |
| 180 | | | | | 900 | 1,300 | 1,500 | | 180 |
| 185 | | | | | | 900 | 1,100 | | 185 |

This information is not for crane operation. Operator must refer to the in-cab information for crane operation. Rated lifting capacities shown on fully extended outriggers do not exceed 85% of the tipping loads and on tires do not exceed 75% of the tipping loads.

36,500 lb Counterweight – Fully Extended Outriggers – 360° Rotation
(All Capacities Are Listed In Pounds)

164.1 ft Main Boom Length

| Radius (ft) | 74 ft Manual Offset Fly | | | | 90 ft Manual Offset Fly | | | | Radius (ft) |
|----------------|-------------------------|-------|-------|-------|-------------------------|-------|-------|-------|----------------|
| | 0° | 15° | 30° | 45° | 0° | 15° | 30° | 45° | |
| 50 | 5,300 | | | | | | | | 50 |
| 55 | 5,300 | | | | | | | | 55 |
| 60 | 5,300 | | | | 4,000 | | | | 60 |
| 65 | 5,300 | | | | 4,000 | | | | 65 |
| 70 | 5,300 | 5,300 | | | 4,000 | | | | 70 |
| 75 | 5,300 | 5,200 | | | 4,000 | | | | 75 |
| 80 | 5,300 | 5,100 | | | 4,000 | 4,100 | | | 80 |
| 85 | 5,300 | 4,900 | 4,400 | | 4,000 | 4,000 | | | 85 |
| 90 | 5,300 | 4,800 | 4,300 | 3,900 | 4,000 | 3,900 | | | 90 |
| 95 | 5,300 | 4,700 | 4,200 | 3,800 | 4,000 | 3,800 | 3,500 | | 95 |
| 100 | 5,300 | 4,600 | 4,100 | 3,700 | 4,000 | 3,700 | 3,300 | 3,100 | 100 |
| 105 | 5,200 | 4,500 | 4,000 | 3,600 | 4,000 | 3,500 | 3,200 | 3,000 | 105 |
| 110 | 5,000 | 4,300 | 3,900 | 3,600 | 3,900 | 3,400 | 3,100 | 3,000 | 110 |
| 115 | 4,900 | 4,200 | 3,800 | 3,500 | 3,800 | 3,300 | 3,100 | 2,900 | 115 |
| 120 | 4,800 | 4,100 | 3,700 | 3,400 | 3,600 | 3,200 | 3,000 | 2,800 | 120 |
| 125 | 4,600 | 4,000 | 3,600 | 3,400 | 3,500 | 3,100 | 2,900 | 2,700 | 125 |
| 130 | 4,500 | 3,900 | 3,500 | 3,300 | 3,400 | 3,000 | 2,800 | 2,600 | 130 |
| 135 | 4,400 | 3,800 | 3,500 | 3,300 | 3,300 | 2,900 | 2,700 | 2,600 | 135 |
| 140 | 3,900 | 3,700 | 3,400 | 3,200 | 3,200 | 2,800 | 2,600 | 2,500 | 140 |
| 145 | 3,500 | 3,700 | 3,300 | 3,200 | 3,100 | 2,800 | 2,500 | 2,400 | 145 |
| 150 | 3,000 | 3,600 | 3,300 | 3,100 | 3,000 | 2,700 | 2,500 | 2,400 | 150 |
| 155 | 2,600 | 3,200 | 3,200 | 3,100 | 2,600 | 2,600 | 2,400 | 2,300 | 155 |
| 160 | 2,200 | 2,800 | 3,100 | 3,000 | 2,200 | 2,500 | 2,300 | 2,300 | 160 |
| 165 | 1,900 | 2,400 | 2,800 | 3,000 | 1,800 | 2,400 | 2,300 | 2,200 | 165 |
| 170 | 1,500 | 2,000 | 2,400 | 2,600 | 1,500 | 2,000 | 2,200 | 2,100 | 170 |
| 175 | 1,200 | 1,700 | 2,000 | 2,200 | 1,100 | 1,700 | 2,000 | 2,100 | 175 |
| 180 | | 1,300 | 1,600 | 1,800 | | 1,300 | 1,700 | 1,900 | 180 |
| 185 | | 1,000 | 1,300 | 1,400 | | 900 | 1,300 | 1,500 | 185 |
| 190 | | | 900 | 1,000 | | | 900 | 1,100 | 190 |

This information is not for crane operation. Operator must refer to the in-cab information for crane operation. Rated lifting capacities shown on fully extended outriggers do not exceed 85% of the tipping loads and on tires do not exceed 75% of the tipping loads.

| 49,100 lb Counterweight – Fully Extended Outriggers – 360° Rotation (All Capacities Are Listed In Pounds) | | | | | | | | | |
|--|-------------------------|--------|--------|--------|-------------------------|-------|-------|-------|-------------|
| 164.1 ft Main Boom Length | | | | | | | | | |
| Radius (ft) | 35 ft Manual Offset Fly | | | | 58 ft Manual Offset Fly | | | | Radius (ft) |
| | 0° | 15° | 30° | 45° | 0° | 15° | 30° | 45° | |
| 40 | 11,000 | | | | | | | | 40 |
| 45 | 11,000 | | | | | | | | 45 |
| 50 | 11,000 | | | | 7,400 | | | | 50 |
| 55 | 11,000 | 11,500 | | | 7,400 | | | | 55 |
| 60 | 11,000 | 11,500 | | | 7,400 | | | | 60 |
| 65 | 11,000 | 11,500 | 11,300 | | 7,400 | 7,800 | | | 65 |
| 70 | 11,000 | 11,500 | 11,100 | 10,100 | 7,400 | 7,600 | | | 70 |
| 75 | 11,000 | 11,500 | 11,000 | 9,900 | 7,400 | 7,400 | | | 75 |
| 80 | 11,000 | 11,500 | 10,800 | 9,700 | 7,400 | 7,300 | 6,200 | | 80 |
| 85 | 11,000 | 11,500 | 10,700 | 9,600 | 7,400 | 7,100 | 6,100 | | 85 |
| 90 | 11,000 | 11,500 | 10,500 | 9,500 | 7,400 | 7,000 | 6,000 | 5,300 | 90 |
| 95 | 11,000 | 11,500 | 10,300 | 9,300 | 7,400 | 6,900 | 5,900 | 5,200 | 95 |
| 100 | 11,000 | 11,300 | 10,100 | 9,200 | 7,400 | 6,700 | 5,800 | 5,100 | 100 |
| 105 | 10,500 | 10,900 | 9,900 | 9,100 | 7,400 | 6,600 | 5,700 | 5,100 | 105 |
| 110 | 9,500 | 10,100 | 9,700 | 9,000 | 7,400 | 6,400 | 5,600 | 5,000 | 110 |
| 115 | 8,600 | 9,200 | 9,400 | 8,900 | 7,400 | 6,300 | 5,500 | 5,000 | 115 |
| 120 | 7,800 | 8,300 | 8,700 | 8,800 | 7,300 | 6,200 | 5,400 | 4,900 | 120 |
| 125 | 7,100 | 7,500 | 7,900 | 8,100 | 7,100 | 6,100 | 5,300 | 4,900 | 125 |
| 130 | 6,400 | 6,800 | 7,100 | 7,300 | 6,900 | 5,900 | 5,300 | 4,800 | 130 |
| 135 | 5,800 | 6,200 | 6,500 | 6,600 | 6,300 | 5,800 | 5,200 | 4,800 | 135 |
| 140 | 5,200 | 5,600 | 5,800 | 6,000 | 5,700 | 5,700 | 5,100 | 4,800 | 140 |
| 145 | 4,700 | 5,000 | 5,200 | 5,300 | 5,200 | 5,600 | 5,000 | 4,700 | 145 |
| 150 | 4,200 | 4,500 | 4,700 | 4,800 | 4,700 | 5,200 | 5,000 | 4,700 | 150 |
| 155 | 3,700 | 4,000 | 4,200 | 4,200 | 4,200 | 4,700 | 4,900 | 4,700 | 155 |
| 160 | 3,300 | 3,500 | 3,700 | | 3,800 | 4,300 | 4,600 | 4,600 | 160 |
| 165 | 2,900 | 3,100 | 3,200 | | 3,400 | 3,800 | 4,200 | 4,300 | 165 |
| 170 | 2,500 | 2,700 | 2,800 | | 3,000 | 3,400 | 3,700 | 3,900 | 170 |
| 175 | 2,100 | 2,300 | 2,400 | | 2,600 | 3,000 | 3,300 | 3,400 | 175 |
| 180 | 1,700 | 1,900 | | | 2,300 | 2,700 | 2,900 | 3,000 | 180 |
| 185 | 1,400 | 1,500 | | | 1,900 | 2,300 | 2,500 | | 185 |
| 190 | | | | | 1,600 | 1,900 | 2,100 | | 190 |
| 195 | | | | | 1,300 | 1,600 | 1,700 | | 195 |
| 200 | | | | | 1,000 | 1,200 | 1,300 | | 200 |
| 205 | | | | | | 900 | | | 205 |

This information is not for crane operation. Operator must refer to the in-cab information for crane operation. Rated lifting capacities shown on fully extended outriggers do not exceed 85% of the tipping loads and on tires do not exceed 75% of the tipping loads.

| 49,100 lb Counterweight – Fully Extended Outriggers – 360° Rotation (All Capacities Are Listed In Pounds) | | | | | | | | | |
|--|-------------------------|-------|-------|-------|-------------------------|-------|-------|-------|-------------|
| 164.1 ft Main Boom Length | | | | | | | | | |
| Radius (ft) | 74 ft Manual Offset Fly | | | | 90 ft Manual Offset Fly | | | | Radius (ft) |
| | 0° | 15° | 30° | 45° | 0° | 15° | 30° | 45° | |
| 50 | 5,300 | | | | | | | | 50 |
| 55 | 5,300 | | | | | | | | 55 |
| 60 | 5,300 | | | | 4,000 | | | | 60 |
| 65 | 5,300 | | | | 4,000 | | | | 65 |
| 70 | 5,300 | 5,300 | | | 4,000 | | | | 70 |
| 75 | 5,300 | 5,200 | | | 4,000 | | | | 75 |
| 80 | 5,300 | 5,100 | | | 4,000 | 4,100 | | | 80 |
| 85 | 5,300 | 4,900 | 4,400 | | 4,000 | 4,000 | | | 85 |
| 90 | 5,300 | 4,800 | 4,300 | 3,900 | 4,000 | 3,900 | | | 90 |
| 95 | 5,300 | 4,700 | 4,200 | 3,800 | 4,000 | 3,800 | 3,500 | | 95 |
| 100 | 5,300 | 4,600 | 4,100 | 3,700 | 4,000 | 3,700 | 3,300 | 3,100 | 100 |
| 105 | 5,200 | 4,500 | 4,000 | 3,600 | 4,000 | 3,500 | 3,200 | 3,000 | 105 |
| 110 | 5,000 | 4,300 | 3,900 | 3,600 | 3,900 | 3,400 | 3,100 | 3,000 | 110 |
| 115 | 4,900 | 4,200 | 3,800 | 3,500 | 3,800 | 3,300 | 3,100 | 2,900 | 115 |
| 120 | 4,800 | 4,100 | 3,700 | 3,400 | 3,600 | 3,200 | 3,000 | 2,800 | 120 |
| 125 | 4,600 | 4,000 | 3,600 | 3,400 | 3,500 | 3,100 | 2,900 | 2,700 | 125 |
| 130 | 4,500 | 3,900 | 3,500 | 3,300 | 3,400 | 3,000 | 2,800 | 2,600 | 130 |
| 135 | 4,400 | 3,800 | 3,500 | 3,300 | 3,300 | 2,900 | 2,700 | 2,600 | 135 |
| 140 | 4,300 | 3,700 | 3,400 | 3,200 | 3,200 | 2,800 | 2,600 | 2,500 | 140 |
| 145 | 4,200 | 3,700 | 3,300 | 3,200 | 3,100 | 2,800 | 2,500 | 2,400 | 145 |
| 150 | 4,100 | 3,600 | 3,300 | 3,100 | 3,000 | 2,700 | 2,500 | 2,400 | 150 |
| 155 | 4,000 | 3,500 | 3,200 | 3,100 | 2,900 | 2,600 | 2,400 | 2,300 | 155 |
| 160 | 3,800 | 3,400 | 3,100 | 3,000 | 2,800 | 2,500 | 2,300 | 2,300 | 160 |
| 165 | 3,400 | 3,300 | 3,100 | 3,000 | 2,700 | 2,400 | 2,300 | 2,200 | 165 |
| 170 | 3,000 | 3,300 | 3,000 | 3,000 | 2,600 | 2,400 | 2,200 | 2,100 | 170 |
| 175 | 2,600 | 3,100 | 3,000 | 2,900 | 2,500 | 2,300 | 2,200 | 2,100 | 175 |
| 180 | 2,300 | 2,700 | 3,000 | 2,900 | 2,200 | 2,200 | 2,100 | 2,100 | 180 |
| 185 | 1,900 | 2,300 | 2,600 | 2,700 | 1,900 | 2,200 | 2,000 | 2,000 | 185 |
| 190 | 1,600 | 2,000 | 2,200 | 2,300 | 1,500 | 2,000 | 2,000 | 2,000 | 190 |
| 195 | 1,300 | 1,600 | 1,900 | | 1,200 | 1,600 | 1,900 | 1,900 | 195 |
| 200 | 1,000 | 1,300 | 1,500 | | 900 | 1,300 | 1,600 | 1,600 | 200 |
| 205 | | 1,000 | 1,100 | | | 1,000 | 1,200 | 1,300 | 205 |
| 210 | | | | | | | 900 | | 210 |

This information is not for crane operation. Operator must refer to the in-cab information for crane operation. Rated lifting capacities shown on fully extended outriggers do not exceed 85% of the tipping loads and on tires do not exceed 75% of the tipping loads.

This page intentionally left blank

This page intentionally left blank

Link-Belt Cranes Lexington, Kentucky www.linkbelt.com

®Link-Belt is a registered trademark. Copyright 2022. We are constantly improving our products and therefore reserve the right to change designs and specifications.